



Ex-proof Lighting







Our innovative lighting solutions, integrated with the smart control systems we have developed and offered to consumers to date, have helped create efficient, safe and environmentally compatible facilities in hundreds of projects.

At a time when the possibilities offered by light and light-based technologies are constantly and rapidly evolving, we are aware of the important role that lighting plays in all areas concerning people and the environment. Therefore, we will continue to be a part of efficient, safe and sustainable environments.





What is a Zone?

It is the analysis of the risk and the classification of the zone based on the level of risk in the facilities where explosive, flammable or combustible materials are produced and/or distributed.

It is examined in two separate categories:

1 - Zone Classification According to Gas Groups
(Zone 0, Zone 1, Zone 2)

2- Zone Classification According to Dust Groups
(Zone 20, Zone 21, Zone 22)

How to Identify a Zone?

Zone classification is performed based on type production specified in the IEC EN 60079-10-1 (Gas) and IEC EN 60079-10-2 (Dust) directives.

Definitions of Zones

Zone 0 : Areas where explosive gas is present continuously, for long periods or frequently

Zone 1 : Areas where explosive gas is likely to occur

Zone 2 : Areas where explosive gas occurs rarely or for a short time

Zone 20 : Areas where explosive dust is present continuously, for long periods or frequently

Zone 21 : Areas where explosive dust is likely to occur

Zone 22 : Areas where explosive dust occurs rarely or for a short time

What Is Protection Type?

Indicates the flame-proof enclosure type of the device to be used in the zone. There are many types of enclosures, depending on the specifications of the device.

How to Choose a Protection Type?

You can choose the most suitable protection type for your facility among the enclosure types specified in the IEC EN 60079-0 directive for Zone classification. Moreover, you can learn the content and scope of the directives issued for these types.



What Is an Explosion Group?

It is the determination and classification of the type of explosive, flammable or combustible material produced and/or transferred within the facility.

It is examined in two separate categories:

1-Gas Groups (IIA, IIB, IIC)

2-Dust Groups (IIIA, IIIB, IIIC)

Explosion Group

Typical Types of Gas and Dust

IIA : Methane, Ethane, Propane, Butane, Octane, Fuel Oil

IIB : Acrylic Nitrile, Ethylene, Ethylene Oxide

IIC: Hydrogen, Acetylene, Carbon Disulfide

IIIA : Insulating Powders (Plastic, cereals, etc.)

IIIB : Semiconductor Powders (Silicon, Zinc, etc.)

IIIC : Conductive Powders (Copper, Iron, Aluminum, Paint Powders etc.)

Note: Equipment in group IIB also provides protection against equipment in group IIA. Equipment in group IIC also provides protection against equipment in group IIA and IIB. Equipment in group IIIB also protects against equipment in group IIIA. Equipment in group IIIC also protects against equipment in groups IIIA and IIIB.

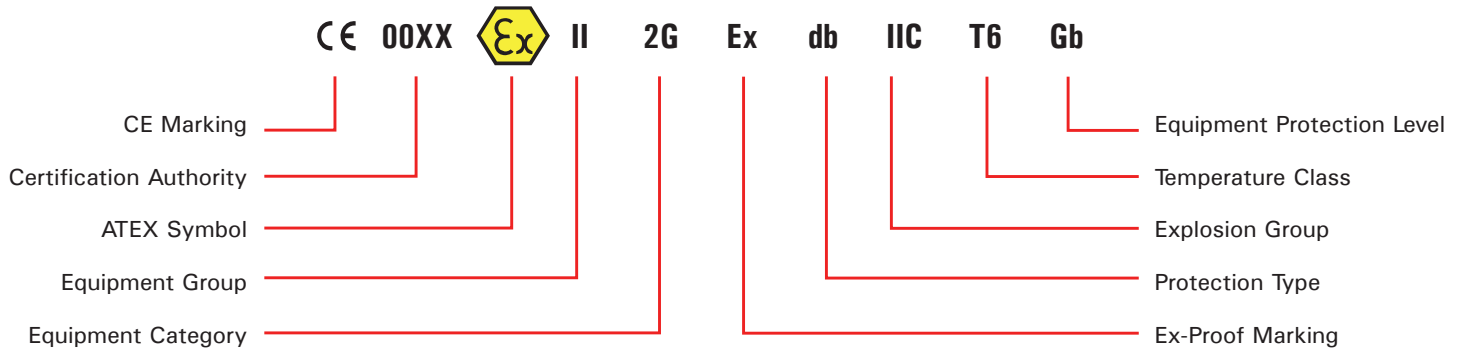
What Is a Temperature Class?

Indicates maximum surface temperature that can occur on the equipment. The determined temperature class should not approach the determined value at a critical level since it is the most important factor triggering the explosion of the liquid, gas or dust material in the area.

Definitions of Temperature Classes

T1	: Maximum surface temperature is lower than 450 °C
T2	: Maximum surface temperature is lower than 300 °C
T3	: Maximum surface temperature is lower than 200 °C
T4	: Maximum surface temperature is lower than 135 °C
T5	: Maximum surface temperature is lower than 100 °C
T6	: Maximum surface temperature is lower than 85 °C

ATEX INFORMATION GUIDE

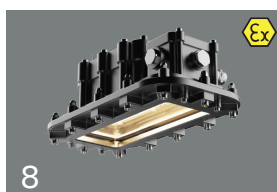


COMPREHENSIVE SOLUTION ACROSS VARIOUS SECTORS



Zone-1 (Gas) Zone-21 (Dust)

Content



■ EX-LINE MINI ZONE-1.21



■ EX-FOR MINI ZONE-1.21



■ HBC EX ZONE-1.21



■ PRL EX ZONE-1.21



■ EX-FLEX

EX-LINE MINI ZONE-1.21

The equipments are Explosion-proof LED Luminaires. They are protected by Increased Safety and flame-proof "db,eb" and Dust Ignition Protection by Enclosure "tb" purposed to be used in Explosive Gas Atmosphere Zone 1 and Explosive Dust Atmosphere Zone 21. The luminaire constructed by LED driver and LED chips panel in the IP 66 enclosure. All the cable gland, breathing and drain device and terminal blocks are certified. The size and appearance of each models are the same, mainly differences are the rated power.

Ex-proof Product Features

Zone	: Zone 1.21 / 2.21 / 2.22
Group / Category	: II / 2GD
Protection Class	: db eb tb
Explosion Group	: IIC / IIIC
Maximum Surface Temperature Class	: T6 / T85°C
Certificate Code	: II 2G Ex db eb IIC T6 Gb II 2D Ex tb IIIC T85°C Db

Mechanical Features

Housing	: Aluminum Injection Housing
Diffuser	: Tempered Glass
Sealing	: High Temperature Resistant Silicone Gasket and TPV Gasket
Gland (Inlet)	: 1 x M20
Screws and Bolts	: AISI 316 Stainless Steel
IP	: IP66
IK Protection Class	: IK10

Electrical and Optical Properties

Light Source	: MID POWER LED
Consumption Power	: 20W / 28W / 36W / 44W / 51W / 57W
Lumen	: 2600 lm / 3600 lm / 4600 lm / 5600 lm / 6300 lm / 7000 lm
Input Voltage	: 220-240V (50-60 Hz)
Colour Temperature	: 3000K / 4000K / 5000K / 5700K / 6500K
CRI	: ≥80
Optic	: 100°

Other Features

Mounting Options	: Ceiling, Cable Tray, Pole, Chain Support
Housing Colour	: SW 306G (Smoked)

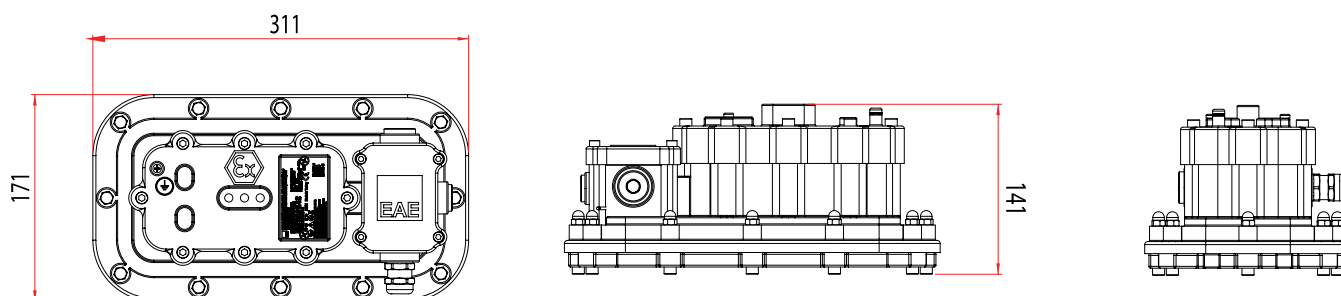
Options

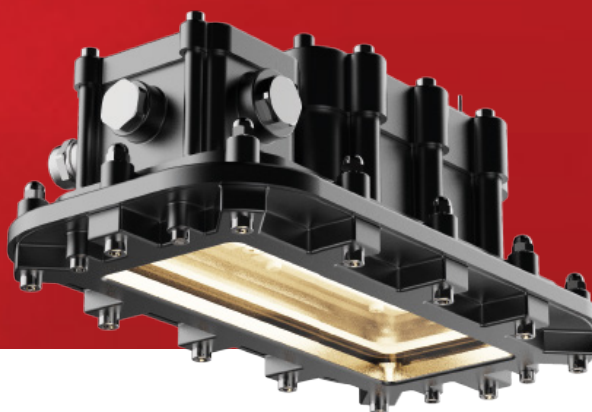
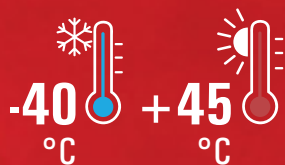
Grand Inlet	: M20, M25, NPT 3/4 and Armored Glands
Gland Output	: M20, M25, NPT 3/4 and Armored Glands
Protection Grid	: Yes
DALI	: Yes
TRW	: Yes

Dimensions

Width	: 171 mm
Length	: 311 mm
Height	: 141 mm
Weight	: 5.2 kg

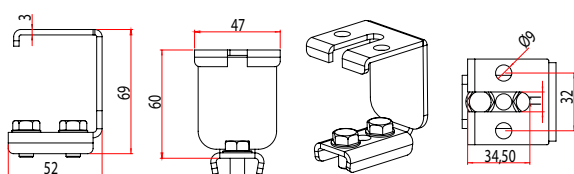
Technical Drawing (mm)





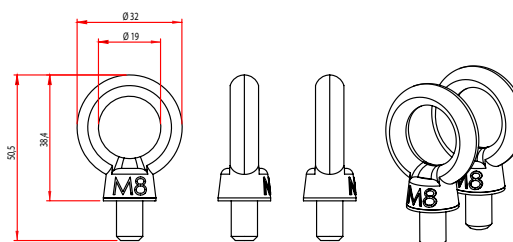
Mounting Tools

Cable Tray and Ceiling Hanger Kit



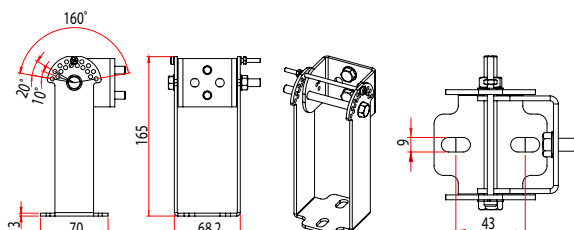
Order Code 3244478

M8 Mapa Chain Hanger Kit



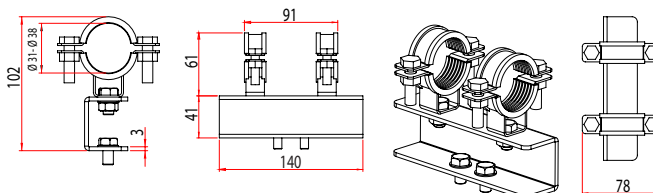
Order Code 3244480

Wall Installation - Installation with Angular Support



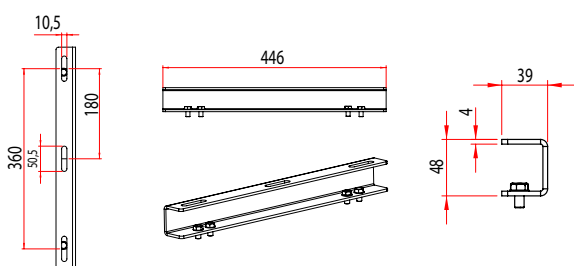
Order Code 3244499

Ø31 - Ø38 Tube Installation



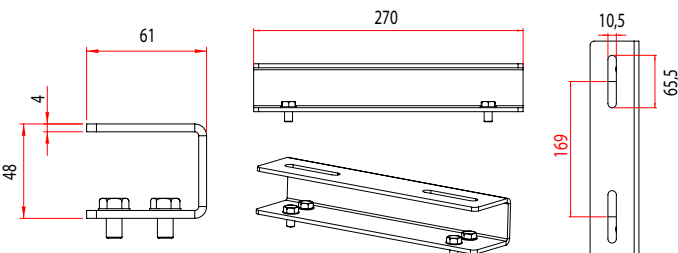
Order Code 3244500

Ceiling and Cable Tray Double Installation



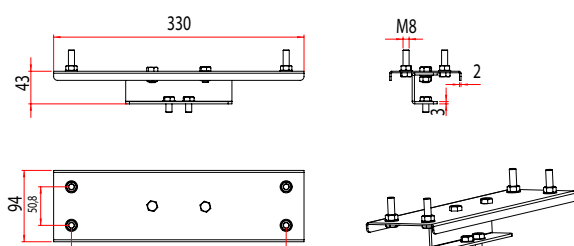
Order Code 3244501

Ceiling and Cable Tray Single Installation - 2



Order Code 3244505

Surface Hanger Kit



Order Code 3245127



Zone 1.21 / 2.21 / 2.22
II 2G Ex db eb IIC T6 Gb
II 2D Ex tb IIIC T85°C Db

EX-FOR MINI ZONE-1.21

The equipment is Explosion-proof Zone-1.21 LED luminaire. Type of protection flame-proof “db” for Explosive Gas Atmosphere Zone 1 and Type of protection “tb” for Explosive Dust Atmosphere Zone 21 have protection level. LEDs and driver are located in an IP66 protected enclosure. All cables, cable glands and terminal blocks are certified. The size and appearance of each model is the same. Their main differences are power and product features.

Ex-proof Product Features

Zone	: Zone 1.21 / 2.21 / 2.22
Group / Category	: II / 2GD
Protection Class	: db tb
Explosion Group	: IIC / IIIC
Maximum Surface Temperature Class	: T6 / T85°
Certificate Code	: II 2G Ex db IIC T6 Gb II 2D Ex tb IIIC T85°C Db

Mechanical Features

Housing	: Aluminum Injection Housing
Diffuser	: Tempered Glass
Sealing	: High Temperature Resistant Silicone Gasket and TPV Gasket
Gland (Inlet)	: Standard 1 x M20
Screws and Bolts	: AISI 316 Stainless Steel
IP	: IP66
IK Protection Class	: IK10

Electrical and Optical Properties

Light Source	: MID POWER LED
Consumption Power	: 20W / 28W / 36W / 44W / 51W
Lumen	: 2387 lm / 3267 lm / 4126 lm / 4890 lm / 5540 lm
Input Voltage	: 220-240V (50-60 Hz)
Colour Temperature	: 3000K / 4000K / 5000K / 5700K / 6500K
CRI	: ≥80
Optic	: 90°

Other Features

Mounting Options	: Ceiling, Cable Tray, Pole, Pendant
Housing Colour	: SW 306G (Smoked)

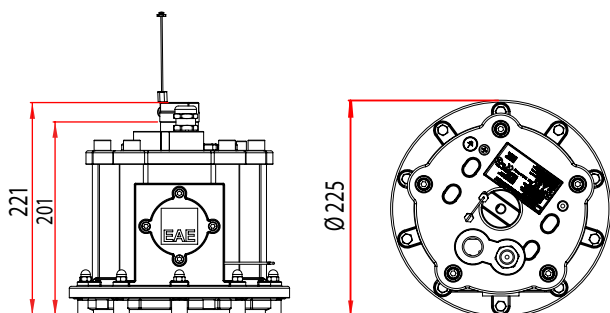
Options

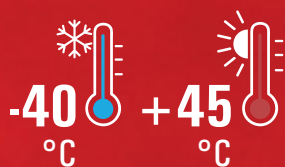
Grand Inlet	: M20, M25, NPT 3/4 and Armored Glands
Gland Output	: M20, M25, NPT 3/4 and Armored Glands
Protection Grid	: Yes
DALI	: Yes
TRW	: Yes

Dimensions

Width	: Ø225 mm
Height	: 221 mm
Weight	: 5.5 kg

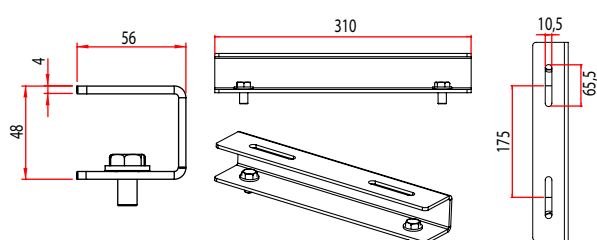
Technical Drawing (mm)





Mounting Tools

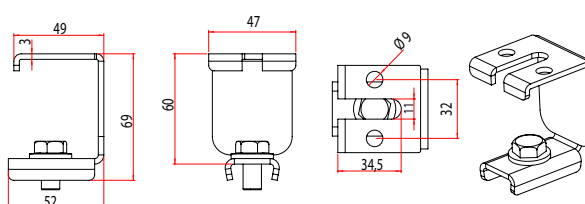
Ceiling and Cable Tray Single Installation



Order Code

3245782

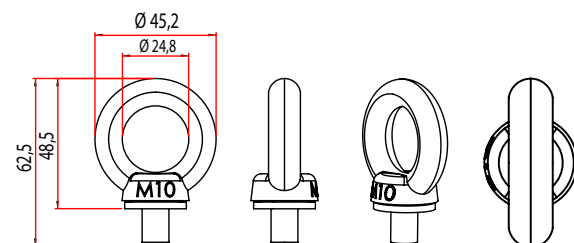
Cable Tray Hanger Set



Order Code

3245131

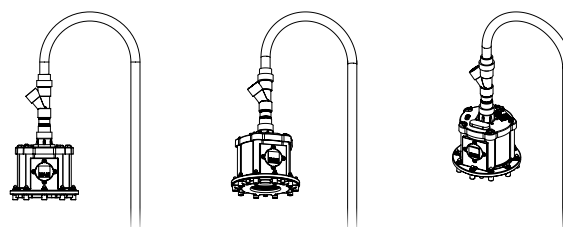
M10 Mapa Chain Hanger Set



Order Code

3245137

Conduit Mounting



Zone 1.21 / 2.21 / 2.22

II 2G Ex db IIC T6 Gb

II 2D Ex tb IIIC T85°C Db

HBC EX ZONE-1.21

The equipments are Explosion-proof LED Luminaires. They are protected “db, eb, mb” and Dust Ignition Protection by Enclosure “tb” purposed to used in Explosive Gas Atmosphere Zone 1 and Explosive Dust Atmosphere Zone 21. The luminaire constructed by LED driver and LED chips panel in the IP 66 enclosure. All the cable gland, breathing and drain device and terminal blocks are certified. The size and appearance of each models are the same, mainly differences are the rated power.

Ex-proof Product Features

Zone	: Zone 1.21 / 2.21 / 2.22
Group / Category	: II / 2GD
Protection Class	: db / eb / mb / tb
Explosion Group	: IIC / IIIC
Maximum Surface Temperature Class	: T6 / T85°C
Certificate Code	: II 2G Ex db eb mb IIC T6 Gb II 2D Ex tb IIIC T85°C Db

Mechanical Features

Housing	: Aluminum Injection Housing
Diffuser	: Tempered Glass
Sealing	: Temperature Resistant Silicone Gasket
Gland (Inlet)	: 1 x M20
Gland (Outlet)	: 1 x M20
Screws and Bolts	: AISI 316 Stainless Steel
IP	: IP66
IK Protection Class	: IK10

Electrical and Optical Properties

Light Source	: MID POWER LED
Consumption Power	: 70W / 107W / 130W
Lumen	: 8388 lm / 12100 lm / 15100 lm
Input Voltage	: 220-240V (50-60 Hz)
Colour Temperature	: 4000K / 5000K / 6500K
CRI	: ≥ 85
Optic	: 110°

Other Features

Mounting Options	: Ceiling, Cable Tray, Pole, Pendant
Housing Colour	: SW 306G (Smoked)

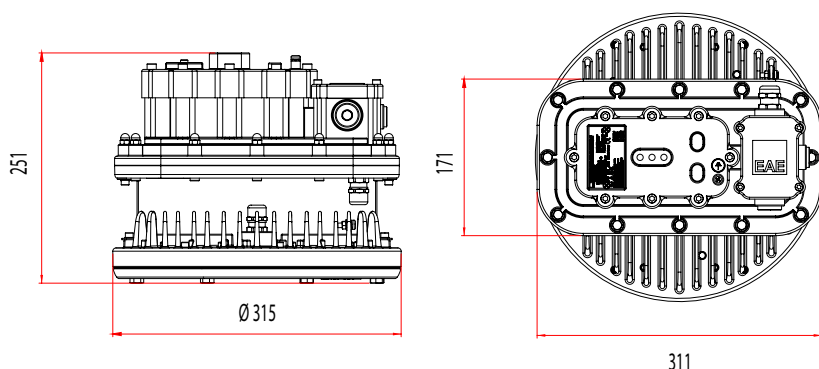
Options

Grand Inlet	: M20, M25, NPT 3/4 and Armored Glands
Gland Output	: M20, M25, NPT 3/4 and Armored Glands
Emergency Kit	: Yes (1-3 Hours for 70W)
DALI	: Yes
TRW	: Yes

Dimensions

Width	: Ø315 mm
Height	: 251 mm
Weight	: 10.1 - 10.9 kg

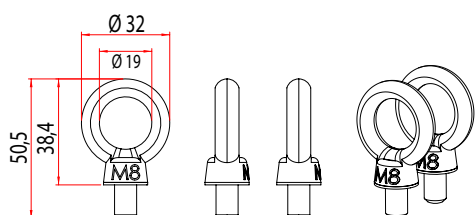
Technical Drawing (mm)





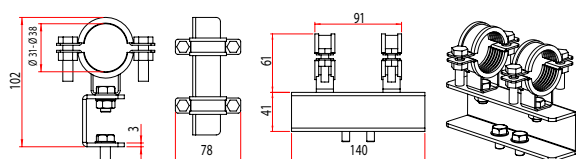
Mounting Tools

M8 Mapa Chain Hanger Set



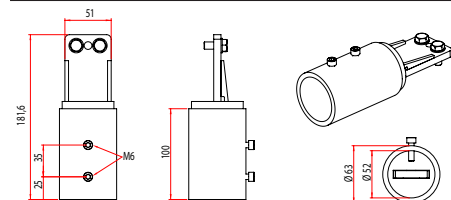
Order Code 3244480

Ø31 - Ø38 Tube Installation



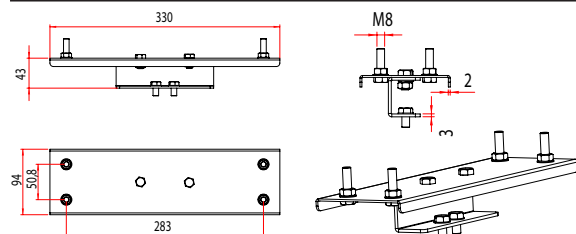
Order Code 3244500

Ø42 - Ø48 HBC-EX Z1 Tube Installation



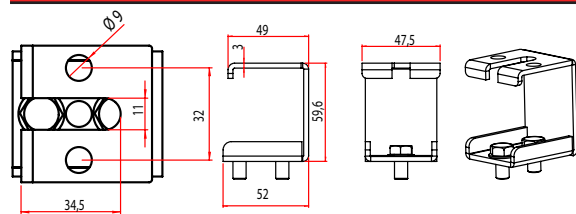
Order Code 3357953

Surface Hanger Set



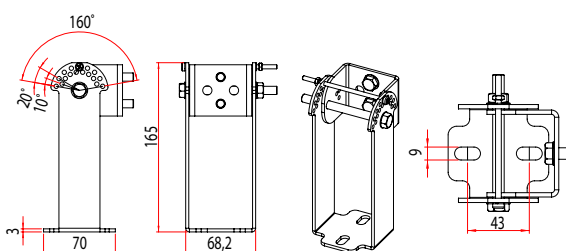
Order Code 3245127

Cable Tray and Ceiling Suspension Set



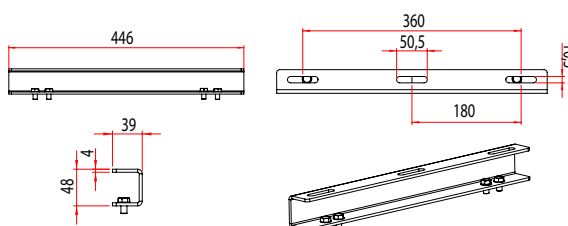
Order Code 3304454

Wall Installation - Installation with Angular Support



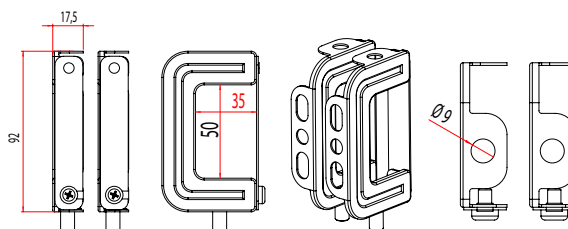
Order Code 3244499

Dual Product Hanging Set



Order Code 3244501

Box Profile Suspension Set



Order Code 3287129



Zone 1.21 / 2.21 / 2.22

II 2G Ex db eb mb IIC T6 Gb
II 2D Ex tb IIC T85°C Db

PRL EX ZONE-1.21

The equipment is Explosion-proof Zone-1.21 LED Luminaire. Type of protection “db, eb, mb” for Explosive Gas Atmosphere Zone 1 and Type of protection “tb” for Explosive Dust Atmosphere Zone 21 have protection level. LED driver and LED chips are panel in IP66 protection enclosure. All cables, cable glands and terminal blocks are certified. The size and appearance of each models are the same, mainly differences are the rated power.

Ex-proof Product Features

Zone	: Zone 1.21 / 2.21 / 2.22
Group / Category	: II / 2GD
Protection Class	: db / eb / mb / tb
Explosion Group	: IIC / IIIC
Maximum Surface Temperature Class	: T6 / T85°C
Certificate Code	: II 2G Ex db,eb,mb IIC T6 Gb II 2D Ex tb IIIC TXX°C Db

Mechanical Features

Housing	: Aluminum Injection Housing
Diffuser	: Tempered Glass
Sealing	: Temperature Resistant Silicone Gasket
Gland (Inlet)	: 1 x M20
Gland (Outlet)	: 1 x M20
Screws and Bolts	: AISI 316 Stainless Steel
IP	: IP66
IK Protection Class	: IK10

Electrical and Optical Properties

Light Source	: MID POWER LED
Consumption Power	: 70W / 82W / 107W / 130W
Lumen	: 9603 lm / 10986 lm / 13905 lm / 16072 lm
Input Voltage	: 220-240V (50-60 Hz)
Colour Temperature	: 4000K / 5000K / 6500K
CRI	: ≥ 85
Optic	: 115°

Other Features

Mounting Options	: Surface Mount
Housing Colour	: SW 306G (Smoked)

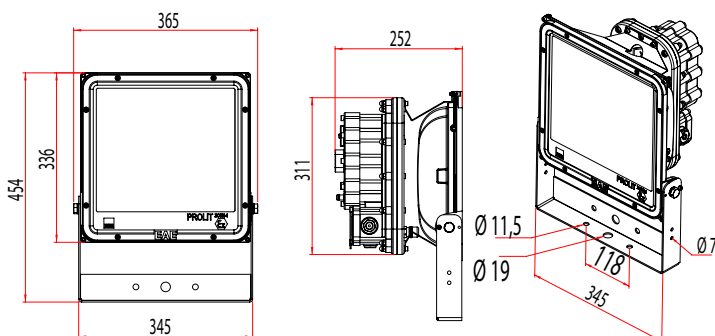
Options

Emergency Kit	: Yes (1-3 Hours) (Only for 70W, 82W Products)
DALI	: Yes
TRW	: Yes

Dimensions

Width	: 365 mm
Length	: 252 mm
Height	: 454 mm
Weight	: 13.5 - 14.4 kg

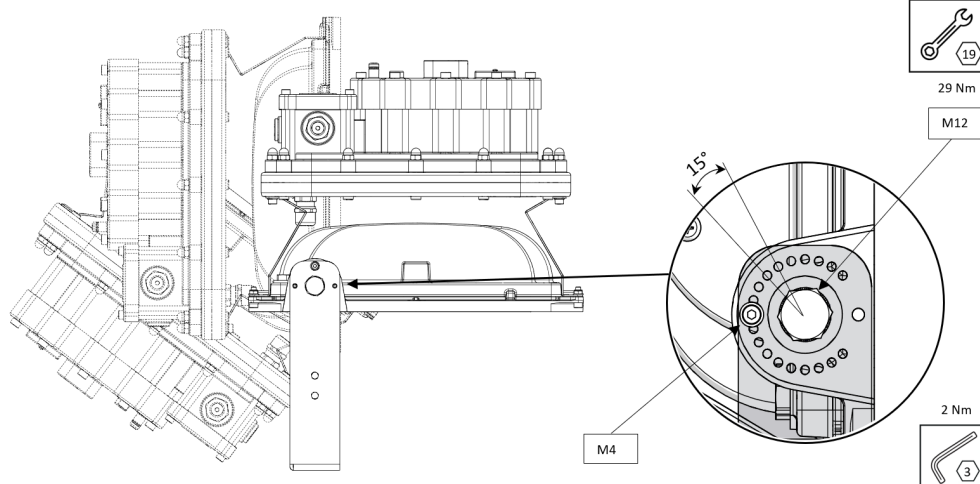
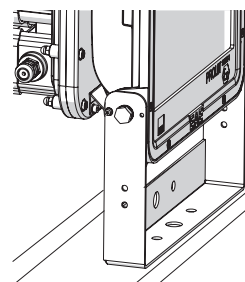
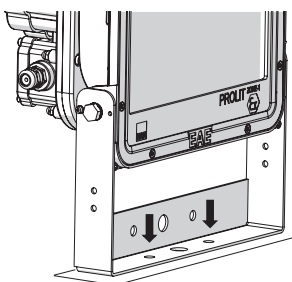
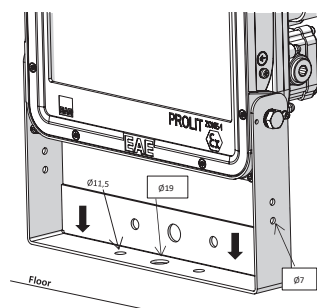
Technical Drawing (mm)



-30 °C +55 °C



Using Mounting Tools



Zone 1.21 / 2.21 / 2.22

II 2G Ex db,eb,mb IIC T6 Gb
II 2D Ex tb IIIC TXX°C Db

EX-FLEX

EX FLEX, which offers a multifunctional solution for emergency lighting and escape lighting, is suitable for use in Zone 1.21 / 2.21 / 2.22 zones that require durability with its high-strength body. It provides reliable illumination at ambient operating temperatures from -20 °C to +50 °C. With the EMG option, it guarantees long-lasting use for harsh environmental conditions.

Ex-proof Product Features

Zone	: Zone 1.21 / 2.21 / 2.22
Group / Category	: II / 2GD
Protection Class	: db eb tb
Explosion Group	: IIC / IIIC
Maximum Surface Temperature Class	: T6 / T80°C
Certificate Code	: II 2G Ex db eb IIC T6 Gb II 2D Ex tb IIIC T80°C Db

Mechanical Features

Housing	: Aluminum Injection Housing
Diffuser	: Borosilicate Tube Glass
Sealing	: Temperature Resistant Silicone Gasket
Gland (Inlet)	: 2x M20
Gland (Outlet)	: 2x M20
Screws and Bolts	: Stainless Steel
IP	: IP66
IK Protection Class	: IK08

Electrical and Optical Properties

Light Source	: LED
Consumption Power	: 5W
Lumen	: 202 lm
Input Voltage	: 220-240V (50-60 Hz)
Colour Temperature	: 4000K
CRI	: ≥80
Optic	: 120°

Other Features

Mounting Options	: Ceiling, Pipe, Pendant, Wall
Housing Colour	: Gray Polyester

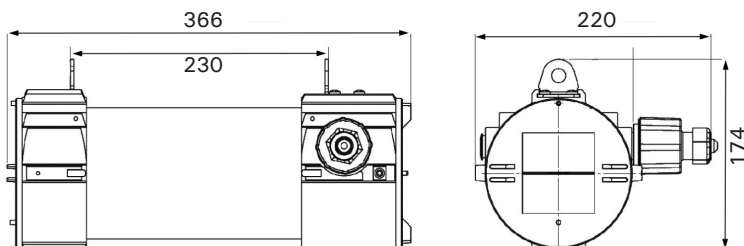
Options

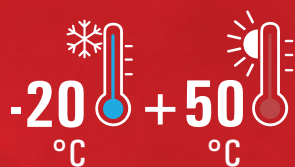
Emergency Kit	: Yes (1-3 Hours)
---------------	-------------------

Dimensions

Width	: 220 mm
Length	: 366 mm
Height	: 174 mm
Hanger Set Width	: 230 mm
Weight	: 4 kg

Technical Drawing (mm)





Mounting Tools

Pipe Installation



Ceiling Installation



Zone 1.21 / 2.21 / 2.22

Ex db IIC T6 Gb or
Ex db eb IIC T6 Gb (with adapter)
Ex tb IIIC T80°C Db



Contents



20

■ PROLIT KOMPAKT V3 EX ZONE-2.22



22

■ PROLIT V3 EX ZONE-2.22



24

■ HBC EX ZONE 2.21



26

■ CSD



28

■ DPE-EX ZONE-2.21



30

■ GALIS EX EXIT ZONE-2.21



Zone-2 (Gas)
Zone-21 (Dust)
Zone-22 (Dust)



■ GALIS EX-PROOF ZONE-2.21



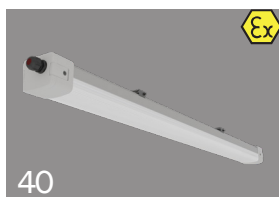
■ EX-COR ZONE-2.22



■ EX-DUAL EXIT ZONE-2.21



■ EX-DUAL ZONE-2.21



■ LINEX ZONE-2.21

PROLIT KOMPAKT V3 EX ZONE-2.22

The equipments are Explosion-proof LED Luminaires. They are protected by Increased Safety "ec" and Dust Ignition Protection by Enclosure "tc" purposed to used in Explosive Gas Atmosphere Zone 2 and Explosive Dust Atmosphere Zone 22. The luminaire constructed by LED driver and LED chips panel in the IP 66 enclosure. All the cable gland, breathing and drain device and terminal blocks are certified. The size and appearance of each models are the same, mainly differences are the rated power.

Ex-proof Product Features

Zone	: Zone 2.22
Group / Category	: II / 3GD
Protection Class	: ec / tc
Explosion Group	: IIC / IIIC
Maximum Surface Temperature Class	: T4 / T135°C
Certificate Code	: II 3G Ex ec IIC T4 Gc II 3D Ex tc IIIC T135°C Dc

Mechanical Features

Housing	: Aluminum Injection Housing
Diffuser	: Tempered Glass & PC Lens
Sealing	: High Temperature Resistant Silicone Gasket
Gland (Inlet)	: 1 x M16
Mounting Tools	: Internal Foot
Screws and Bolts	: AISI 316 Stainless Steel
IP	: IP66
IK Protection Class	: IK09

Electrical and Optical Properties

Light Source	: HIGH POWER LED / MID POWER LED
Consumption Power	: 40W / 43W / 49W / 51W / 62W / 70W / 75W / 95W / 96W
Lumen	: 8128 lm / 7549 lm / 11366 lm / 11206 lm
Input Voltage	: 220-240V (50-60 Hz)
Colour Temperature	: 4000K / 5000K / 5700K / 6500K
CRI	: ≥ 70 / ≥ 80
Optic	: High Power LED: 16° / 27° / 52° / 98° / ASM Mid Power LED: 35° / 60° / 90°

Other Features

Mounting Options	: Ceiling, Cable Tray, Pole
Housing Colour	: MW 3004 (Black)

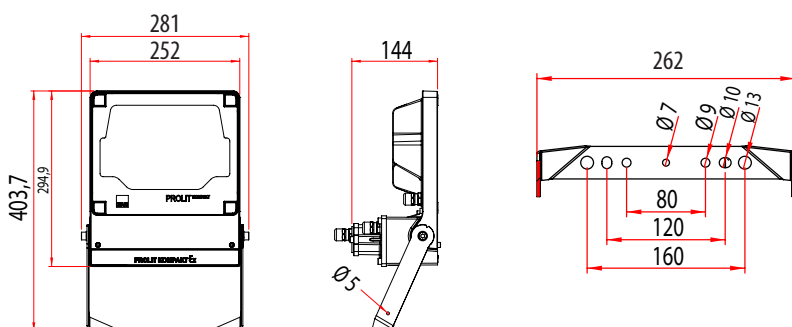
Options

Grand Inlet	: M16, M20, M25, NPT 3/4 and Armored Glands
Gland Output	: M16, M20 and Armored Glands
TRW	: Yes

Dimensions

Width	: 281 mm
Length	: 144 mm
Height	: 404 mm
Weight	: 5.1 - 5.3 kg

Technical Drawing (mm)

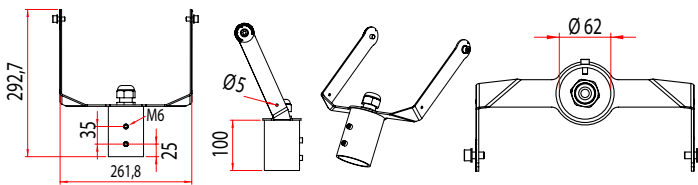


-20 °C +55 °C



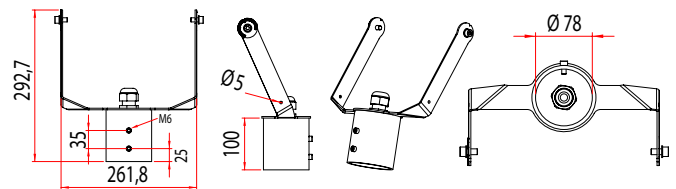
Mounting Tools

Ø60 Tube Installation



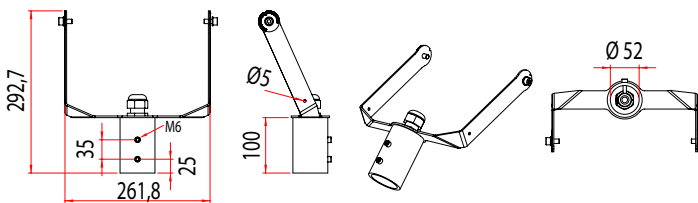
Order Code 3324097

Ø76 Tube Installation



Order Code 3345372

Ø42 - Ø48 Tube Installation



Order Code 3345367



Zone 2.22

II 3G Ex ec IIC T4 Gc
II 3D Ex tc IIIC T135°C Dc

PROLIT V3 EX ZONE-2.22

The equipments are Explosion-proof LED Luminaires. They are protected by Increased Safety "ec" and Dust Ignition Protection by Enclosure "tc" purposed to used in Explosive Gas Atmosphere Zone 2 and Explosive Dust Atmosphere Zone 22. The luminaire constructed by LED driver and LED chips panel in the IP 66 enclosure. All the cable gland, breathing and drain device and terminal blocks are certified. The size and appearance of each models are the same, mainly differences are the rated power.

Ex-proof Product Features

Zone	: Zone 2.22
Group / Category	: II / 3GD
Protection Class	: ec / tc
Explosion Group	: IIC / IIIC
Maximum Surface Temperature Class	: T4 / T135°C
Certificate Code	: II 3G Ex ec IIC T4 Gc II 3D Ex tc IIIC T135°C Dc

Mechanical Features

Housing	: Aluminum Injection Housing
Diffuser	: Tempered Glass
Sealing	: High Temperature Resistant Silicone Gasket
Gland (Inlet)	: 1 x M16
Mounting Tools	: Internal Foot
Screws and Bolts	: AISI 316 Stainless Steel
IP	: IP66
IK Protection Class	: IK09

Electrical and Optical Properties

Light Source	: POWER LED
Consumption Power	: 102W / 132W / 150W / 176W / 206W
Lumen	: 14879 lm / 17000 lm / 19753 lm / 22585 lm / 25760 lm
Input Voltage	: 220-240V (50-60 Hz)
Colour Temperature	: 4000K / 5000K / 5700K / 6500K
CRI	: ≥ 70
Optic	: 22° / 32° / 57° / 99° / AS

Other Features

Mounting Options	: Ceiling, Cable Tray, Pole
Housing Colour	: MW 3004 (Black)

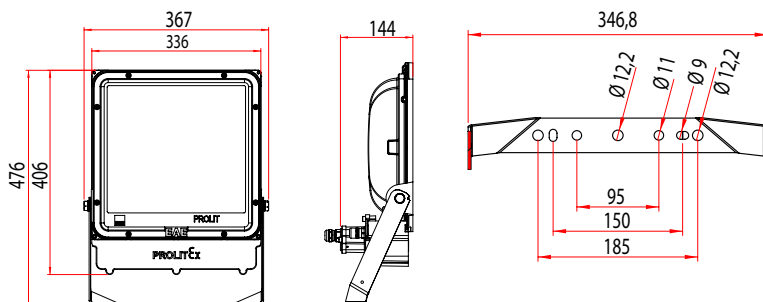
Options

Grand Inlet	: M16, M20, M25, NPT 3/4 and Armored Glands
Gland Output TRW	: M16, M20 and Armored Glands : Yes

Dimensions

Width	: 367 mm
Length	: 476 mm
Height	: 144 mm
Weight	: 9 Kg

Technical Drawing (mm)

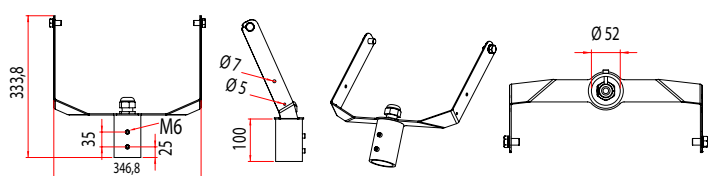


-20°C +55°C



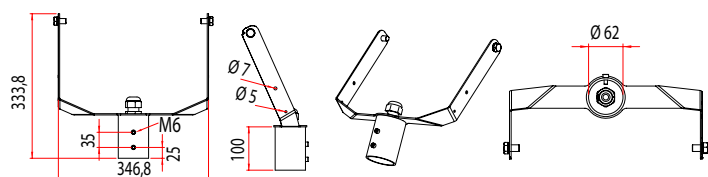
Mounting Tools

Ø42 - Ø48 Tube Installation



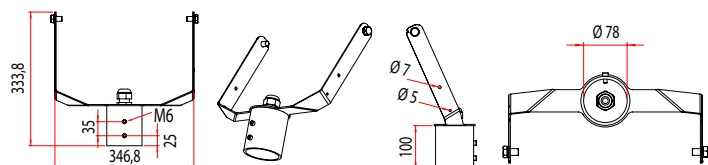
Order Code 3345373

Ø60 Tube Installation



Order Code 3345376

Ø76 Tube Installation



Order Code 3345377



Zone 2.22

II 3G Ex ec IIC T4 Gc
II 3D Ex tc IIIC T135°C Dc

HBC EX ZONE-2.21

The equipments are Explosion-proof LED Luminaires. They are protected “nR” and Dust Ignition Protection by Enclosure “tb” purposed to used in Explosive Gas Atmosphere Zone 2 and Explosive Dust Atmosphere Zone 21. The luminaire constructed by LED driver and LED chips panel in the IP 66 enclosure. All the cable gland, breathing and drain device and terminal blocks are certified. The size and appearance of each models are the same, mainly differences are the rated power.

Ex-proof Product Features

Zone	: Zone 2.21 / 2.22
Group / Category	: II / 3G / 2D
Protection Class	: nR / tb
Explosion Group	: IIC / IIIC
Maximum Surface Temperature Class	: T5 / T95°C - T6 / T85°C
Certificate Code	: II 3G Ex nR IIC T6...T5 Gc II 2D Ex tb IIIC T80...T95°C Db

Mechanical Features

Housing	: Aluminum Injection Housing
Diffuser	: Tempered Glass & PC Lens
Sealing	: High Temperature Resistant Silicone Gasket
Gland (Inlet)	: 1 x M16
Screws and Bolts	: AISI 316 Stainless Steel
IP	: IP66
IK Protection Class	: IK10

Electrical and Optical Properties

Light Source	: MID POWER LED
Consumption Power	: 75W / 98W / 115W / 154W / 181W / 197W
Lumen	: 8000 lm / 11470 lm / 13410 lm / 17517 lm / 19219 lm / 20125 lm
Input Voltage	: 220-240V (50-60 Hz)
Colour Temperature	: 2700K / 3000K / 4000K / 5000K / 5700K / 6500K
CRI	: ≥ 80
Optic	: 50° / 80°

Other Features

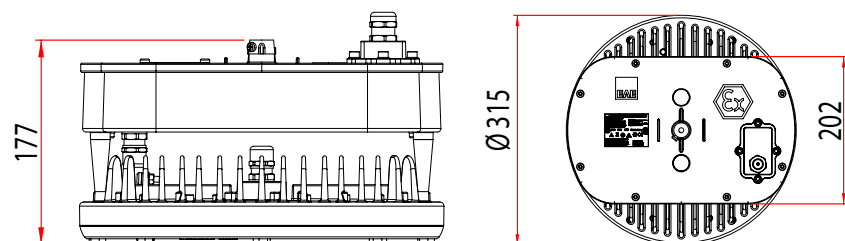
Mounting Options	: Ceiling, Cable Tray, Pendant, Busbar
Housing Colour	: SW 306G (Smoked)

Options

Grand Inlet	: M16, M20, M25, NPT 3/4 and Armored Glands
Gland Output	: M16, M20 and Armored Glands
DALI	: Yes
Emergency Kit	: Yes (1-3 Hours) (Only for 75W, 98W and 115W Products)
TRW	: Yes

Dimensions

Width	: Ø315 mm
Height	: 177 mm
Weight	: 6.5 - 7.5 kg

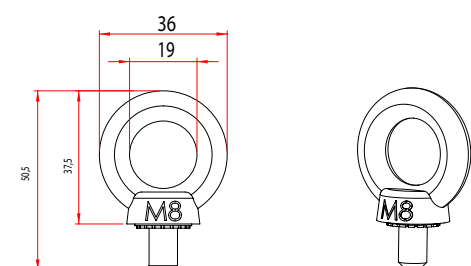


Technical Drawing (mm)



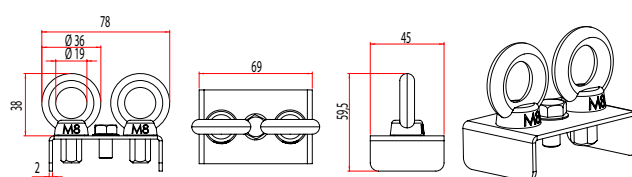
Mounting Tools

M8 Mapa Chain (Single) Hanger Set



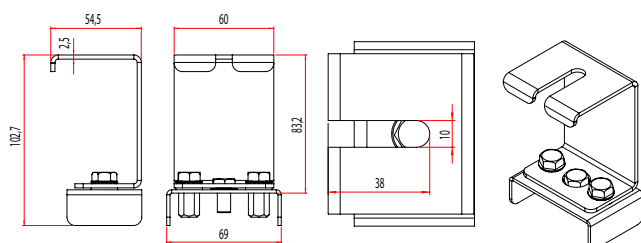
Order Code 3096325

M8 Double Mapa Chain Hanger Set



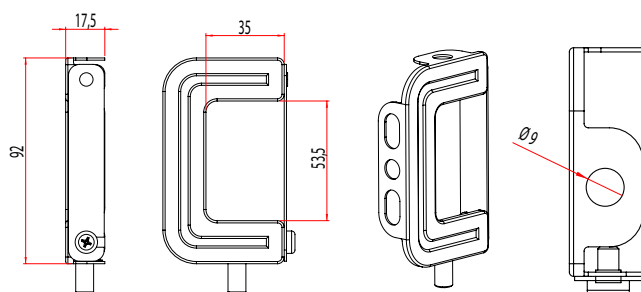
Order Code 3224449

Emergency Kit Cable Tray Hanger Set



Order Code 3188240

Busbar Hanger Set



Order Code 3188241



Zone 2.21 / 2.22

II 3G Ex nR IIC T5, T6 Gc
II 2D Ex tb IIIC T80...T95°C Db

CSD

Cushldo is a luminaire designed for Zone 2.22. With its polycarbonate body, it guarantees a long service life by withstanding high impact and heat resistance. In addition to offering alternative suspension types and ACK option; it is budget friendly with its MID POWER LED.

Ex-proof Product Features

Zone	: Zone 2.22
Group / Category	: II / 3GD
Protection Class	: nR / tc
Explosion Group	: IIC / IIIC
Maximum Surface Temperature Class	: T6 / T85°
Certificate Code	: II 3G Ex nR IIC T6 Gc II 3D Ex tc IIIC T85°C Dc

Mechanical Features

Housing	: Polycarbonate Housing (PC) with High Mechanical Resistance
Diffuser	: Robust Polycarbonate Diffuser (PC) with High Mechanical Resistance
Sealing	: Polyurethane Cast Gasket
Gland (Inlet)	: Input Std. 1 x M20
Screws and Bolts	: AISI 316 Stainless Steel
IP	: IP66
IK Protection Class	: IK10

Electrical and Optical Properties

Light Source	: MID POWER LED
Consumption Power	: 22W / 27W / 30W / 37W / 42W / 53W / 58W / 71W
Lumen	: 2910 lm / 3640 lm / 4000 lm / 5010 lm / 5820 lm / 7280 lm / 8010 lm / 10010 lm
Input Voltage	: 220-240V (50-60 Hz)
Colour Temperature	: 4000K / 6500K
CRI	: ≥80
Optic	: 120°

Other Features

Mounting Options	: Ceiling, Wall, Cable Tray, Angular, Pendant
Housing Colour	: RAL 9002 (Grey White)

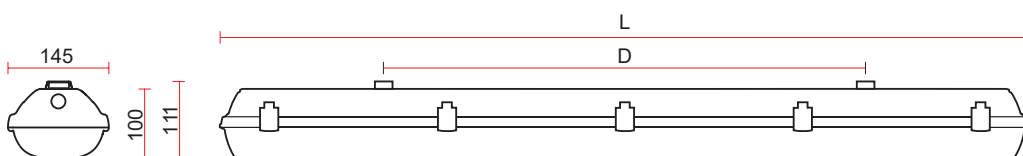
Options

Emergency Kit	: Yes (1-3 Hours)
DALI	: Yes
TRW	: Yes

Dimensions

Width	: 145 mm
Length (L)	: 1272 mm / 1572 mm
Hanger Set Width (D)	: 700 mm / 940 mm
Height	: 111 mm
Weight	: 3.2 - 4.4 kg

Technical Drawing (mm)

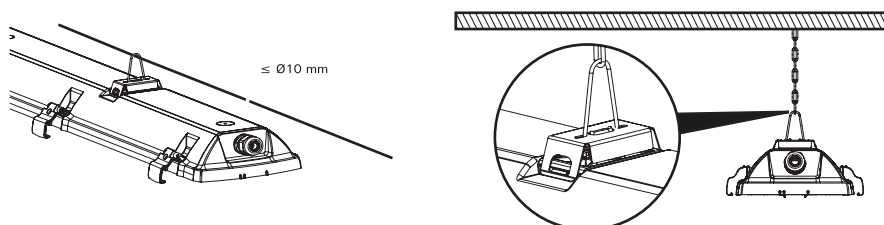


-25 °C +55 °C

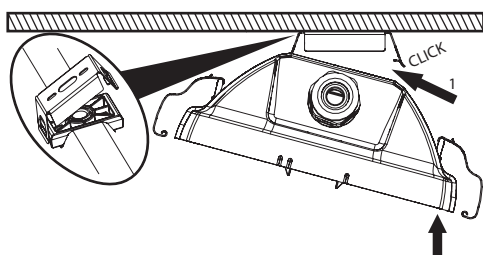


Mounting Tools

Wall Installation and Ceiling Support Installation



Ceiling and Wall / Angled Installation



Zone 2.22

II 3G Ex nR IIC T6 Gc
II 3D Ex tc IIIC T85°C Dc

DPE-EX ZONE-2.21

The equipments are Explosion-proof LED Luminaires. They are protected “nR” and Dust Ignition Protection by Enclosure “tb” purposed to used in Explosive Gas Atmosphere Zone 2 and Explosive Dust Atmosphere Zone 21. The luminaire constructed by LED driver and LED chips panel in the IP 65 enclosure. All the cable gland, breathing and drain device and terminal blocks are certified. The size and appearance of each models are the same, mainly differences are the rated power.

Ex-proof Product Features

Zone	: Zone 2 / 21
Group / Category	: II / 3G / 2D
Protection Class	: nR / tb
Explosion Group	: IIC / IIIC
Maximum Surface Temperature Class	: T6 / T75°C
Certificate Code	: II 3G Ex nR IIC T6 Gc II 2D Ex tb IIIC T75°C Db

Mechanical Features

Housing	: Sheet Metal Body
Diffuser	: Tempered Glass
Sealing	: TPV Gasket
Gland (Inlet)	: 1 x M16
Gland (Outlet)	: 1 x M16
Screws and Bolts	: IP65
IK Protection Class	: IK07

Electrical and Optical Properties

Light Source : MID POWER LED

D Type (Housing 1)						
W	36	40	44	48	52	55
Lm	4398	4833	5268	5700	6131	6562

V Type (Housing 2)		
W	87	127
Lm	10000	14592

Z Type (Housing 2)		
W	87	127
Lm	10000	14592

D Type (Housing 2)														
W	59	63	67	71	73	75	79	83	87	91	97	103	105	113
Lm	6989	7414	7840	8262	8683	8800	9105	9522	10000	10600	11299	12000	12140	12976

*Consumption Power (W)

*Lumen (Lm)

Input Voltage	: 220-240V (50-60 Hz)
Colour Temperature	: 2700K / 3000K / 4000K / 5000K / 5700K / 6500K
CRI	: ≥ 80
Optic	: 120°

Options

Grand Inlet	: M16, M20, M25, NPT 3/4 and Armored Glands
Gland Output	: M16, M20 and Armored Glands
DALI	: Yes
Emergency Kit	: Yes (1-3 Hours)
Mounting Options	: Wall Mounting
TRW	: Yes

Other Features

Mounting Options	: Sheet Metal Panel
Housing Colour	: RAL 9016 (Traffic White)

Dimensions (mm)

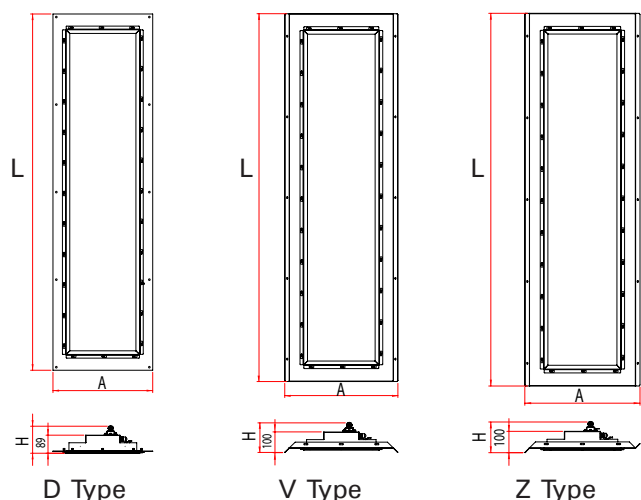
D Type	
Width	: 490
Length (L)	: 1150 / 1750
Height	: 134

V Type	
Width	: 490
Length (L)	: 1754
Height	: 147

Z Type	
Width	: 490
Length (L)	: 1754
Height	: 147

Weight	: 19 - 23 Kg
--------	--------------

Technical Drawings (mm)



-20 °C +45 °C



Zone 2.21 / 2.22

II 3G Ex nR IIC T6 Gc

II 2D Ex tb IIIC T75°C Db

GALIS EX EXIT ZONE-2.21

The equipments are Explosion-proof LED Luminaires. Type of protection "nR" and Dust Ignition Protection by Enclosure "tb" purposed to used in Explosive Gas Atmosphere Zone 2 and Explosive Dust Atmosphere Zone 21. The luminaire constructed by LED driver and LED chips panel in the IP 66 enclosure. All the cable gland, breathing and drain device and terminal blocks are certified. It is an emergency lighting and guidance luminaire . It shows the direction of emergency escape with the direction signs on it.

Ex-proof Product Features

Zone	: Zone 2.21 / 2.22
Group / Category	: II / 3G / 2D
Protection Class	: nR / tb
Explosion Group	: IIC / IIIC
Maximum Surface Temperature Class	: T6 / T55°C
Certificate Code	: II 3G Ex nR IIC T6 Gc II 2D Ex tb IIIC T55°C Db

Mechanical Features

Housing	: Aluminum Extrusion Body
Diffuser	: Tempered Glass
Sealing	: High Temperature Resistant Silicone Gasket
Rakor	: 1 x M20
Screws and Bolts	: AISI 316 Stainless Steel
IP	: IP66
IK Protection Class	: IK09

Electrical and Optical Properties

Light Source	: MID POWER LED
Consumption Power	: 5W
Lumen	: 629 lm
Input Voltage	: 220-240V (50-60 Hz)
Colour Temperature	: 2700K / 3000K / 4000K / 5000K / 5700K / 6500K
CRI	: ≥80
Optic	: 120°

Other Features

Mounting Options	: Pipe, Angular, Box Profile, Pendant, Ceiling
Housing Colour	: SW0964 / RAL 9006 (Metallic Gray)

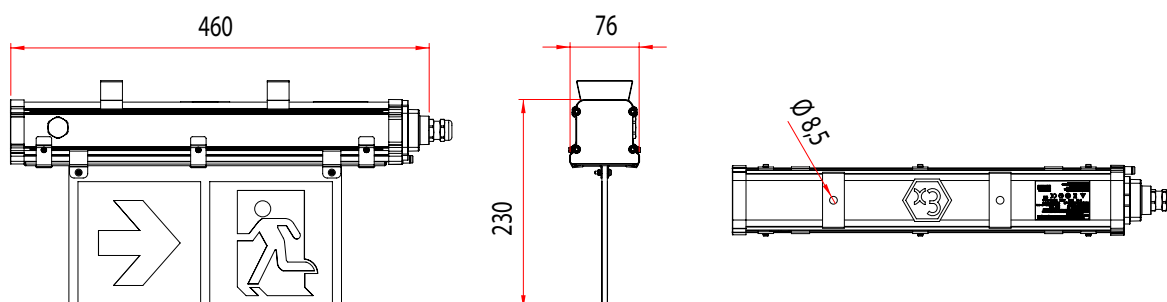
Dimensions

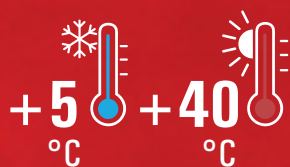
Width	: 76 mm
Length	: 460 mm
Height	: 230 mm
Weight	: 2,1 kg

Options

Grand Inlet	: M20, M25, NPT 3/4 and Armored Glands
Emergency Kit	: Yes (1-3 Hours), Activated by Power Outage
TRW	: No

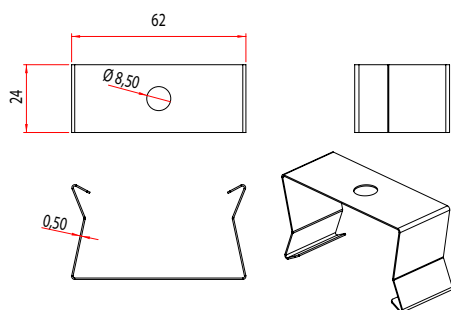
Technical Drawing (mm)





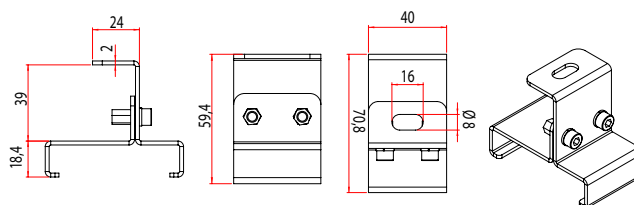
Mounting Tools

Hanger Spring



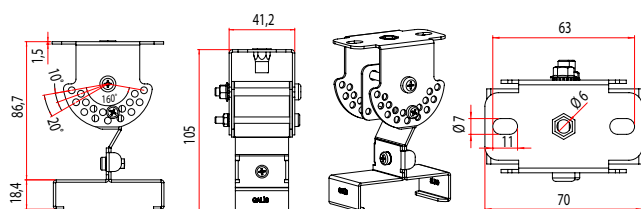
Order Code 1006876

Fixed Hanger Set (Double)



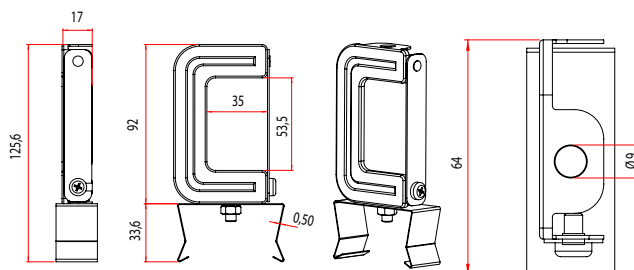
Order Code 3164773

Angled Hanger Set (Stainless)



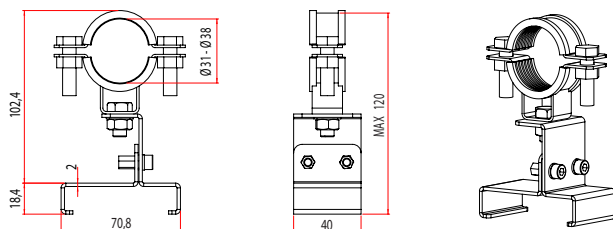
Order Code 3236243

Busbar Hanger Set



Order Code 3290008

Ø31 - Ø38 Tube Installation



Order Code 3290438



Zone 2.21 / 2.22

II 3G Ex nR IIC T6 Gc
II 2D Ex tb IIIC T55°C Db

GALIS EX-PROOF ZONE-2.21

The equipments are Explosion-proof LED Luminaires. Type of protection "nR" and Dust Ignition Protection by Enclosure "tb" purposed to used in Explosive Gas Atmosphere Zone 2 and Explosive Dust Atmosphere Zone 21. The luminaire constructed by LED driver and LED chips panel in the IP 66 enclosure. All the cable gland, breathing and drain device and terminal blocks are certified.

Ex-proof Product Features

Zone	: Zone 2.21 / 2.22
Group / Category	: II / 3G / 2D
Protection Class	: nR / tb
Explosion Group	: IIC / IIIC
Maximum Surface Temperature Class	: T6 / T55°C
Certificate Code	: II 3G Ex nR IIC T6 Gc II 2D Ex tb IIIC T55°C Db

Mechanical Features

Housing	: Aluminum Extrusion Body
Diffuser	: Tempered Glass
Sealing	: High Temperature Resistant Silicone Gasket
Gland (Inlet)	: 1 x M20
Gland (Outlet)	: 1 x M20
Screws and Bolts	: AISI 316 Stainless Steel
IP	: IP66
IK Protection Class	: IK09

Electrical and Optical Properties

Light Source	: MID POWER LED
Consumption Power	: 19W / 23W / 28W / 37W / 55W / 70W
Lumen	: 2443 lm / 3158 lm / 4106 lm / 5208 lm / 7711 lm / 9716 lm
Input Voltage	: 220-240V (50-60 Hz)
Colour Temperature	: 2700K / 3000K / 4000K / 5000K / 5700K / 6500K
CRI	: ≥80
Optic	: 120°

Options

Other Features

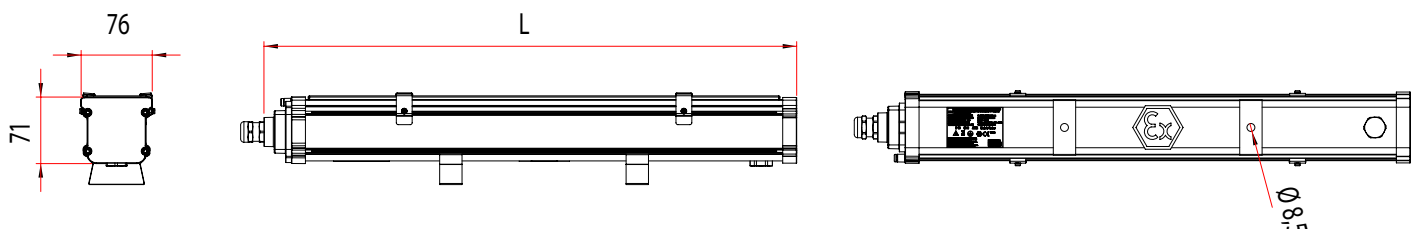
Mounting Options	: Pipe, Angled, Profile, Pendant, Ceiling
Housing Colour	: SW0964 / RAL 9006 (Metallic Gray)

Grand Inlet	: M20, M25, NPT 3/4 and Armored Glands
Gland Output	: M20, M25, NPT 3/4 and Armored Glands
Emergency Kit	: Yes (1-3 Hours) Only (23W, 28W, 37W, 55W and 70W Products)
TRW	: Yes

Dimensions

Width	: 76 mm
Length STD. (L)	: 566 mm / 886 mm / 1286 mm / 1528 mm
Length TRW (L)	: 595 mm / 915 mm / 1315 mm / 1557 mm
Height	: 71 mm
Weight	: 2,3 - 5,4 kg

Technical Drawing (mm)

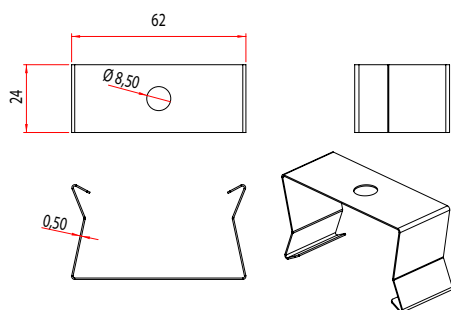


-20°C +40°C



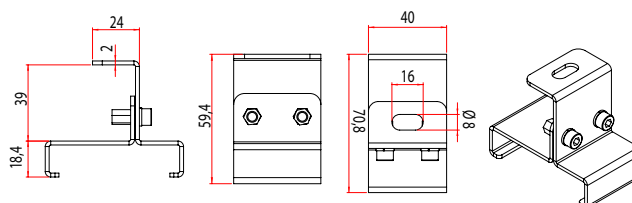
Mounting Tools

Hanger Spring



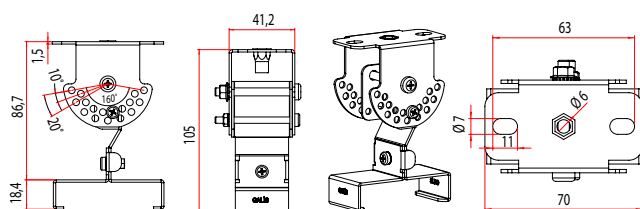
Order Code 1006876

Fixed Hanger Set (Double)



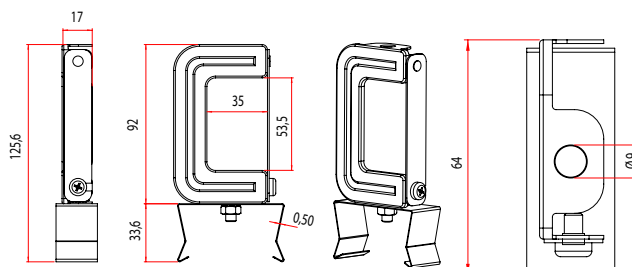
Order Code 3164773

Angled Hanger Set (Stainless)



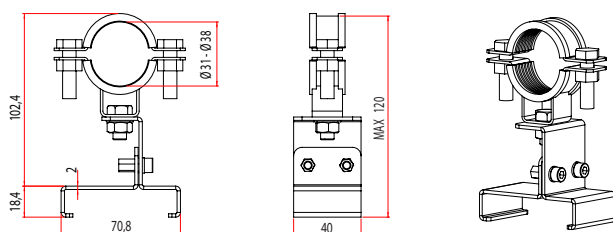
Order Code 3236243

Busbar Hanger Set



Order Code 3290008

Ø31 - Ø38 Tube Installation



Order Code 3290438



Zone 2.21 / 2.22

II 3G Ex nR IIC T6 Gc

II 2D Ex tb IIC T55°C Db

EX-COR ZONE-2.22

The equipments are Explosion-proof LED Luminaires. Type of protection "nR" and Dust Ignition Protection by Enclosure "tc" purposed to used in Explosive Gas Atmosphere Zone 2 and Explosive Dust Atmosphere Zone 22. The luminaire constructed by LED driver and LED chips panel in the IP65 enclosure. All the cable gland, breathing and drain device and terminal blocks are certified.

Ex-proof Product Features

Zone	: Zone 2.22
Group / Category	: II / 3GD
Protection Class	: nR / tc
Explosion Group	: IIC / IIIC
Maximum Surface Temperature Class	: T6 / T65°C
Certificate Code	: II 3G Ex nR IIC T6 Gc II 3D Ex tc IIIC T65°C Dc

Mechanical Features

Housing	: GRP Body (Glass reinforced polyester)
Diffuser	: PC (Polycarbonate) Opal Diffuser
Sealing	: Polyurethane Casting Gasket
Gland (Inlet)	: 1x M20 Plastic Ex
Gland (Outlet)	: 1x M20 Plastic Ex
Screws and Bolts	: AISI 301 Stainless Steel
IP	: IP65
IK Protection Class	: IK08

Electrical and Optical Properties

Light Source	: MID POWER LED
Consumption Power	: 29W / 40W / 51W / 60W / 72W / 81W
Lumen	: 3478 lm / 3453 lm / 5117 lm / 6487 lm / 7538 lm / 8961 lm / 9906 lm
Input Voltage	: 220-240V (50-60 Hz)
Colour Temperature	: 2700K / 3000K / 4000K / 5000K / 5700K / 6500K
CRI	: ≥ 80
Optic	: 120°

Other Features

Mounting Options	: Ceiling, Wall, Cable Tray, Pendant
Housing Colour	: RAL 7035 (Grey)

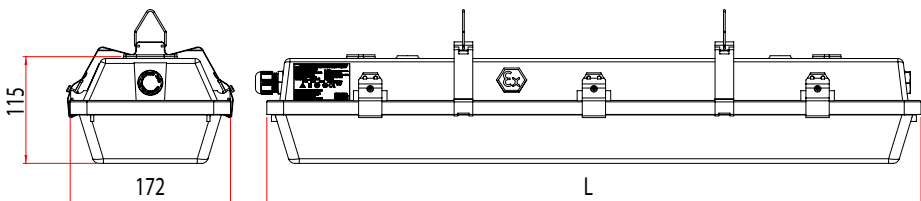
Options

Grand Inlet	: M20, M25 and Armored Glands
Gland Output	: M20, M25 and Armored Glands
DALI	: Yes
Emergency Kit	: Yes (1-3 Hours)
TRW	: Yes

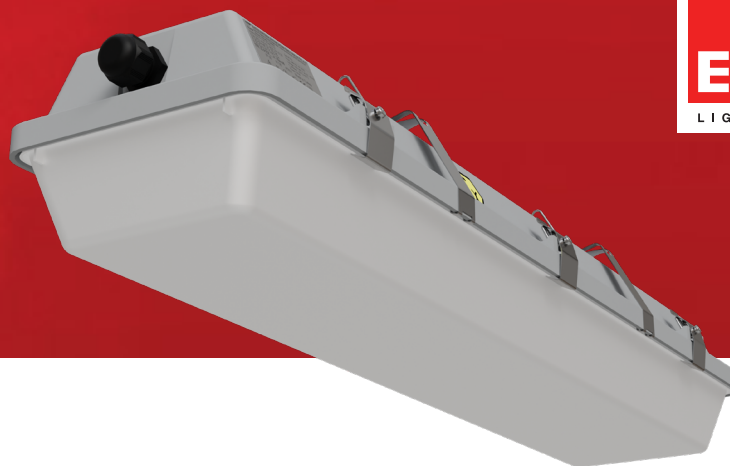
Dimensions

Width	: 172 mm
Length (L)	: 702 mm / 1312 mm / 1602 mm
Height	: 115 mm
Weight	: 2,6 - 4,3 kg

Technical Drawing (mm)

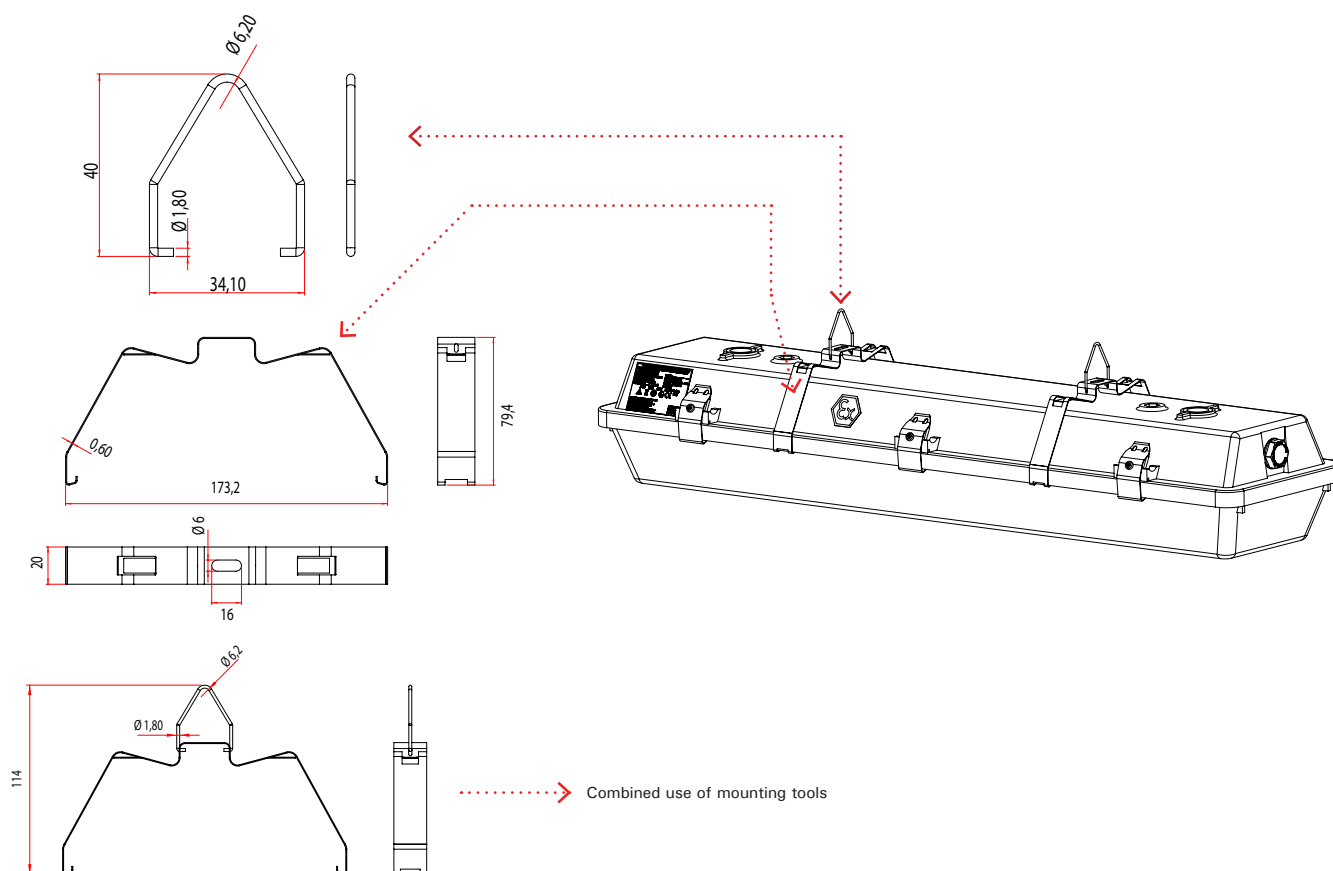


-20°C +50°C

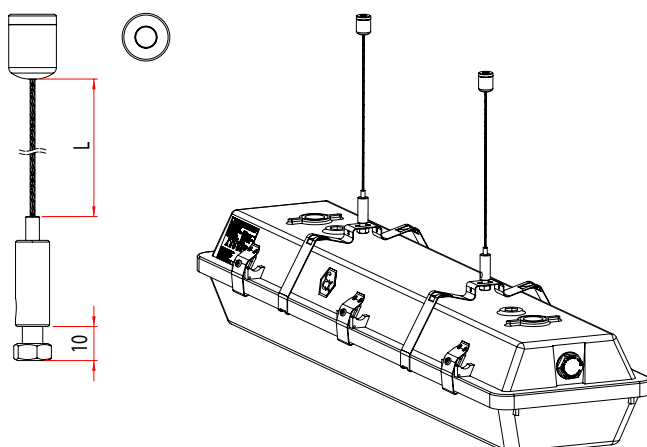


Mounting Tools

Fixed Use



Elevator Hanger Kit (50CM / 100CM / 150CM / 200CM)



Order Code	M6X10	L
3325607	M6X10	50CM
3325604	M6X10	100CM
3325605	M6X10	150CM
3325606	M6X10	200CM



Zone 2.22

II 3G Ex nR IIC T6 Gc
II 3D Ex tc IIIC T65°C Dc

EX-DUAL EXIT ZONE-2.21

The equipment is Explosion-proof Zone-2.21 LED Escape luminaire. Type of protection “nR” for Explosive Gas Atmosphere Zone 2 and Type of protection “tb” for Explosive Dust Atmosphere Zone 21 have protection level. LEDs and driver are located in an IP66 protected enclosure. All cables, cable glands and terminal blocks are certified. The size and appearance of each model is the same. Their main differences are product features.

Ex-proof Product Features

Zone	: Zone 2.21
Group / Category	: II / 3G / 2D
Protection Class	: nR / tb
Explosion Group	: IIC / IIIC
Maximum Surface Temperature Class	: T6 / T80°C
Certificate Code	: II 3G Ex nR IIC T6 Gc II 2D Ex tb IIIC T80°C Db

Mechanical Features

Housing	: GRP Body (Glass reinforced polyester)
Diffuser	: Tempered Glass & Sticker
Sealing	: High Temperature Resistant Silicone Gasket
Gland (Inlet)	: 1 x M16 Plastic Ex
Gland (Outlet)	: 1 x M16 Plastic Ex
Screws and Bolts	: AISI 316 Stainless Steel
IP	: IP66
IK Protection Class	: IK08

Electrical and Optical Properties

Light Source	: Mid Power Led
Consumption Power	: 6W
Lumen	: 107 lm
Input Voltage	: 220-240V (50-60 Hz)
Colour Temperature	: 2700K / 3000K / 4000K / 5000K / 5700K / 6500K
CRI	: ≥ 80
Optic	: 120°

Other Features

Mounting Options	: Ceiling, Wall, Pipe, Busbar Cable Tray, Pendant
Housing Colour	: RAL 7047 (Grey)

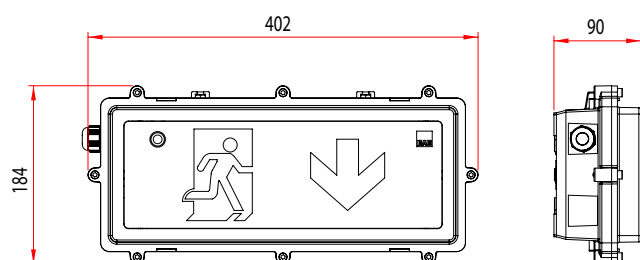
Options

Grand Inlet	: M16, M20, M25, NPT 3/4 and Armored Glands
Gland Output	: M16, M20, M25, NPT 3/4 and Armored Glands
DALI	: Yes
Emergency Kit	: Yes (1-3 Hours), Activated by Power Outage
TRW	: Yes

Dimensions

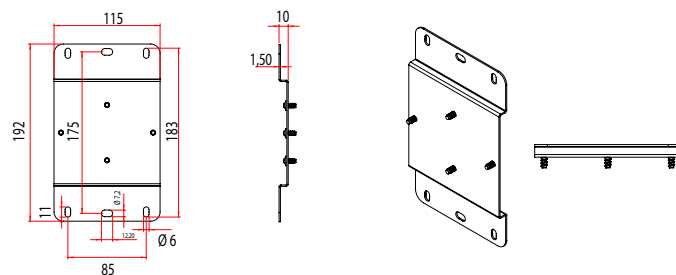
Width	: 90 mm
Length	: 402 mm
Height	: 184 mm
Weight	: 3 - 3.2 kg

Technical Drawing (mm)



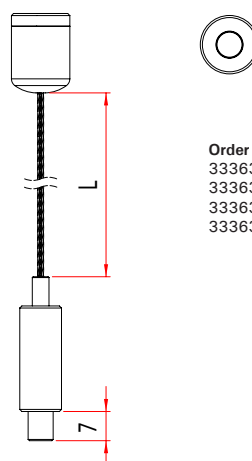


Wall Mount Hanger Kit



Order Code 332260

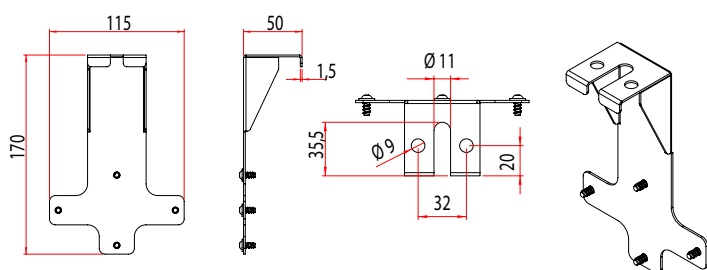
Elevator Hanger Kit



Order Code		L
3336380	M6X7	50CM
3336383	M6X7	100CM
3336381	M6X7	150CM
3336382	M6X7	200CM

Technical drawing of the 1000 Series Locking Arm. The drawing includes three views: a front view, a side view, and an assembly view. The front view shows a locking arm with a width of 115 mm and a height of 244 mm. The side view shows the arm's profile with a height of 92.5 mm, a width of 59.6 mm, and a mounting hole offset of 53.5 mm. The assembly view shows the arm mounted on a plate with a hole diameter of $\varnothing 9$.

Cable Tray and Ceiling Suspension Set



II 3G Ex nR IIC T6 Gc
II 2D Ex tb IIIC T80°C Db

EX-DUAL ZONE-2.21

The equipment is Explosion-proof Zone-2.21 LED Luminaire. Type of protection “nR” for Explosive Gas Atmosphere Zone 2 and Type of protection “tb” for Explosive Dust Atmosphere Zone 21 have protection level. LEDs and driver are located in an IP66 protected enclosure. All cables, cable glands and terminal blocks are certified. The size and appearance of each model is the same. Their main differences are power and product features.

Ex-proof Product Features

Zone	: Zone 2 / Zone 21
Group / Category	: II / 3G / 2D
Protection Class	: nR / tb
Explosion Group	: IIC / IIIC
Maximum Surface Temperature Class	: T6 / T80°C
Certificate Code	: II 3G Ex nR IIC T6 Gc II 2D Ex tb IIIC T80°C Db

Mechanical Features

Housing	: GRP Body (Glass reinforced polyester)
Diffuser	: Tempered Glass & PC Lens
Sealing	: High Temperature Resistant Silicone Gasket
Gland (Inlet)	: 1 x M16 Plastic Ex
Gland (Outlet)	: 1 x M16 Plastic Ex
Screws and Bolts	: AISI 316 Stainless Steel
IP	: IP66
IK Protection Class	: IK08

Electrical and Optical Properties

Light Source	: Mid Power Led
Consumption Power	: 26W / 33W / 42W
Lumen	: 3414 lm / 4195 lm / 5276 lm
Input Voltage	: 220-240V (50-60 Hz)
Colour Temperature	: 2700K / 3000K / 4000K / 5000K / 5700K / 6500K
CRI	: ≥ 80
Optic	: 18° / 23° / 30° / 46° / 60° / 90°

Other Features

Mounting Options	: Ceiling, Wall, Pipe, Busbar Cable Tray, Pendant
Housing Colour	: RAL 7047 (Grey)

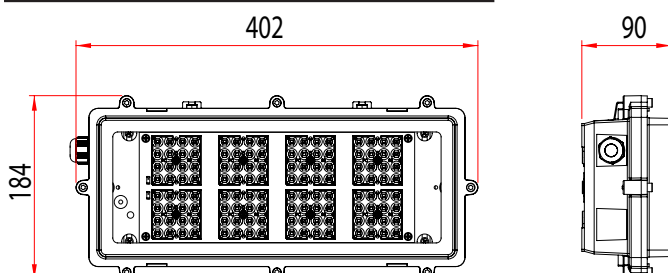
Options

Emergency Kit	: Yes (1-3 Hours)
DALI	: Yes
TRW	: Yes

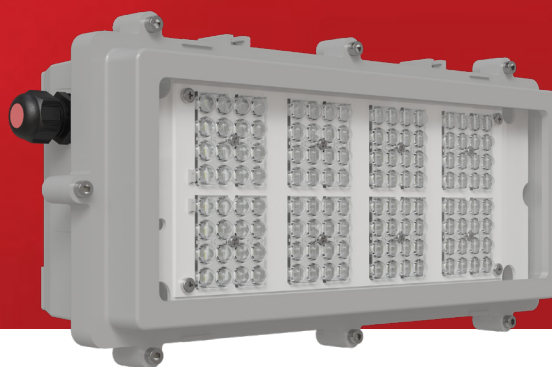
Dimensions

Width	: 90 mm
Length	: 402 mm
Height	: 184 mm
Weight	: 3 - 3.2 Kg

Technical Drawing (mm)

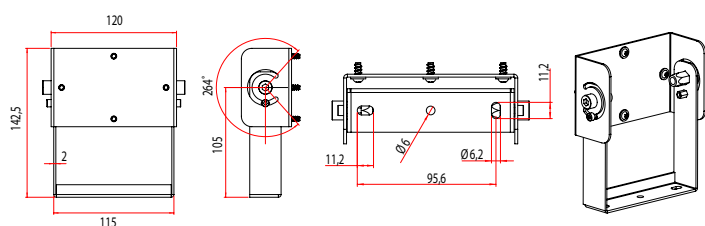


-20°C +55°C



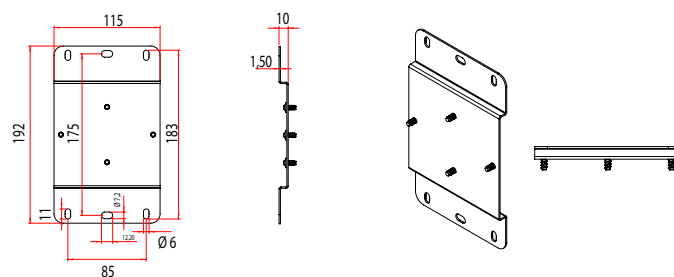
Mounting Tools

Angled Hanger Set



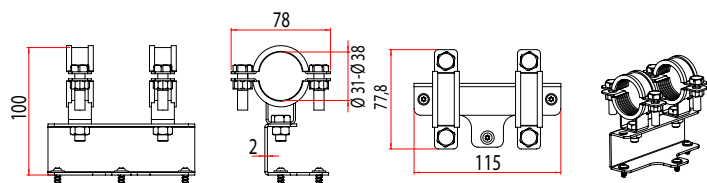
Order Code 3322256

Wall Mount Hanger Kit



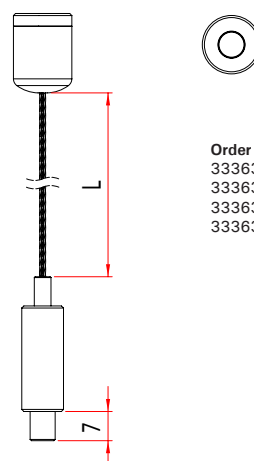
Order Code 3322260

Ø31 - Ø38 Tube Installation



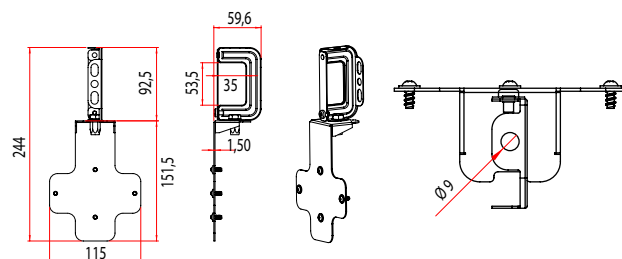
Order Code 3322258

Elevator Hanger Set



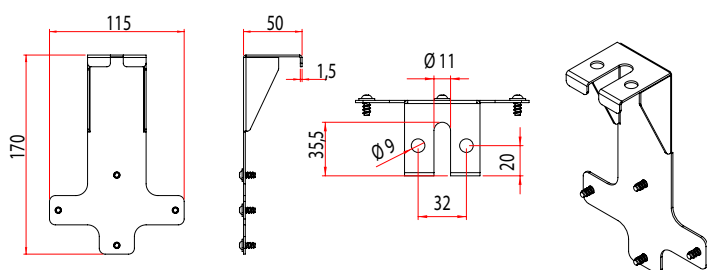
Order Code		L
3336380	M6X7	50CM
3336383	M6X7	100CM
3336381	M6X7	150CM
3336382	M6X7	200CM

Busbar Hanger Set



Order Code 3322259

Cable Tray and Ceiling Suspension Set



Order Code 3322261



Zone 2.21 / 2.22

II 3G Ex nR IIC T6 Gc
II 2D Ex tb IIIC T80°C Db

LINEX ZONE-2.21

The equipment is Explosion-proof Zone-2.21 LED Luminaire. Type of protection "ec" for Explosive Gas Atmosphere Zone 2 and Type of protection "tb" for Explosive Dust Atmosphere Zone 21 have protection level. LEDs and driver are located in an IP66 protected enclosure. All cables, cable glands and terminal blocks are certified. The appearance of each model is the same. Their main differences are length, power and product features.

Ex-proof Product Features

Zone	: Zone 2 / Zone 21
Group / Category	: II / 3G / 2D
Protection Class	: ec / tb
Explosion Group	: IIC / IIIC
Maximum Surface Temperature Class	: T6 / T85°C
Certificate Code	: II 3G Ex ec IIC T6 Gc II 2D Ex tb IIIC T85°C Db

Mechanical Features

Housing	: Aluminum Extrusion Body
Diffuser	: PC Opal Diffuser
Sealing	: High Temperature Resistant Silicone Gasket
Gland (Inlet)	: 1 x M20 Plastic Ex
Gland (Outlet)	: 1 x M20 Plastic Ex
Screws and Bolts	: AISI 316 Stainless Steel
IP	: IP66
IK Protection Class	: IK07

Electrical and Optical Properties

Light Source	: LED
Consumption Power	: 25W / 30W / 34W / 40W / 56W / 64W / 73W / 79W
Lumen	: 3267 lm / 3945 lm / 4453 lm / 5277 lm / 7417 lm / 8340 lm / 9443 lm / 10328 lm
Input Voltage	: 220-240V (50-60 Hz)
Colour Temperature	: 2700K / 3000K / 4000K / 5000K / 5700K / 6500K
CRI	: ≥ 80
Optic	: 120°

Other Features

Mounting Options	: Surface Mount
Housing Colour	: RAL 9016 (Grey White)

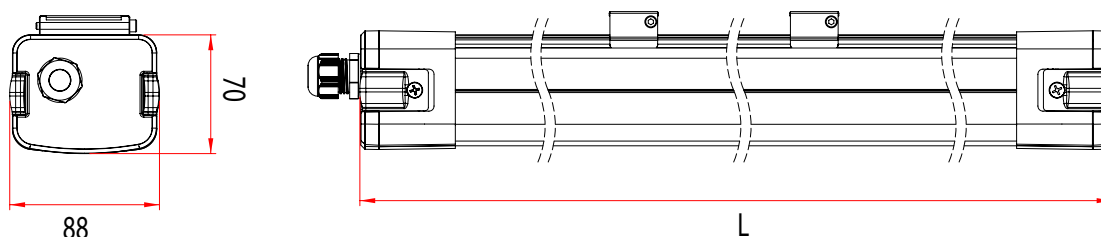
Options

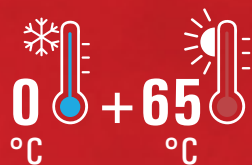
Rakor	: M20 Armored Glands
Emergency Kit	: Yes (1-3 Hours)
DALI	: Yes
TRW	: Yes

Dimensions

Width	: 88 mm
Length (L)	: 1200 mm / 1500 mm
Height	: 70 mm
Weight	: 1,9 - 2,5 kg

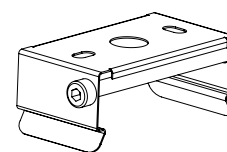
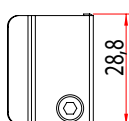
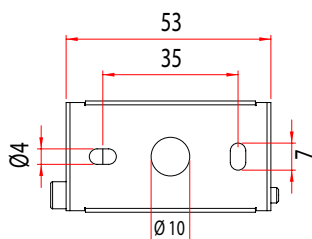
Technical Drawing (mm)



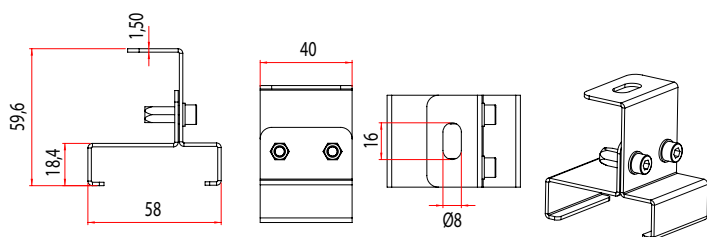


Mounting Tools

Hanger Spring (Comes with Product)

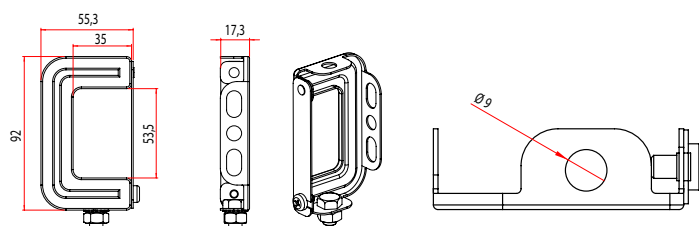


Fixed Hanger Set



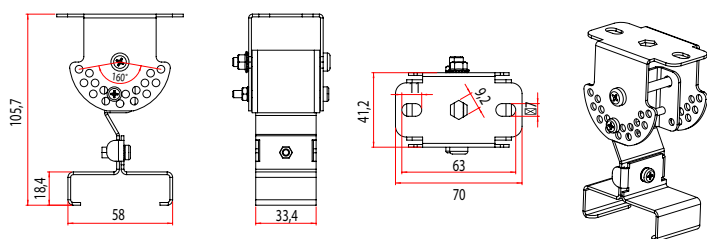
Order Code 3339935

Busbar Hanger Set



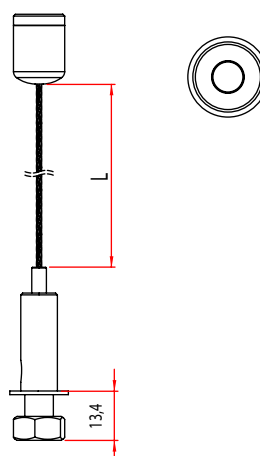
Order Code 3330966

Angled Hanger Set



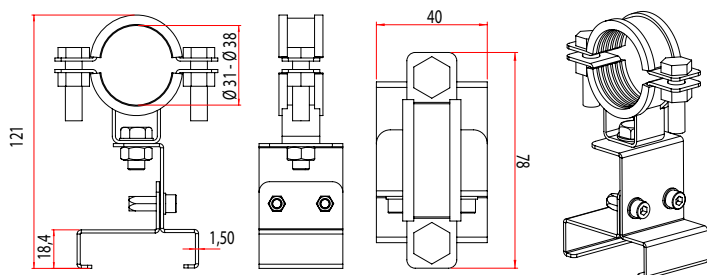
Order Code 3330579

Elevator Hanger Kit



Order Code	M8X13,5	L
3142319	M8X13,5	50CM
3142320	M8X13,5	100CM
3142321	M8X13,5	150CM
3142322	M8X13,5	200CM
3142323	M8X13,5	300CM
3142324	M8X13,5	500CM

Ø31 - Ø38 Tube Installation



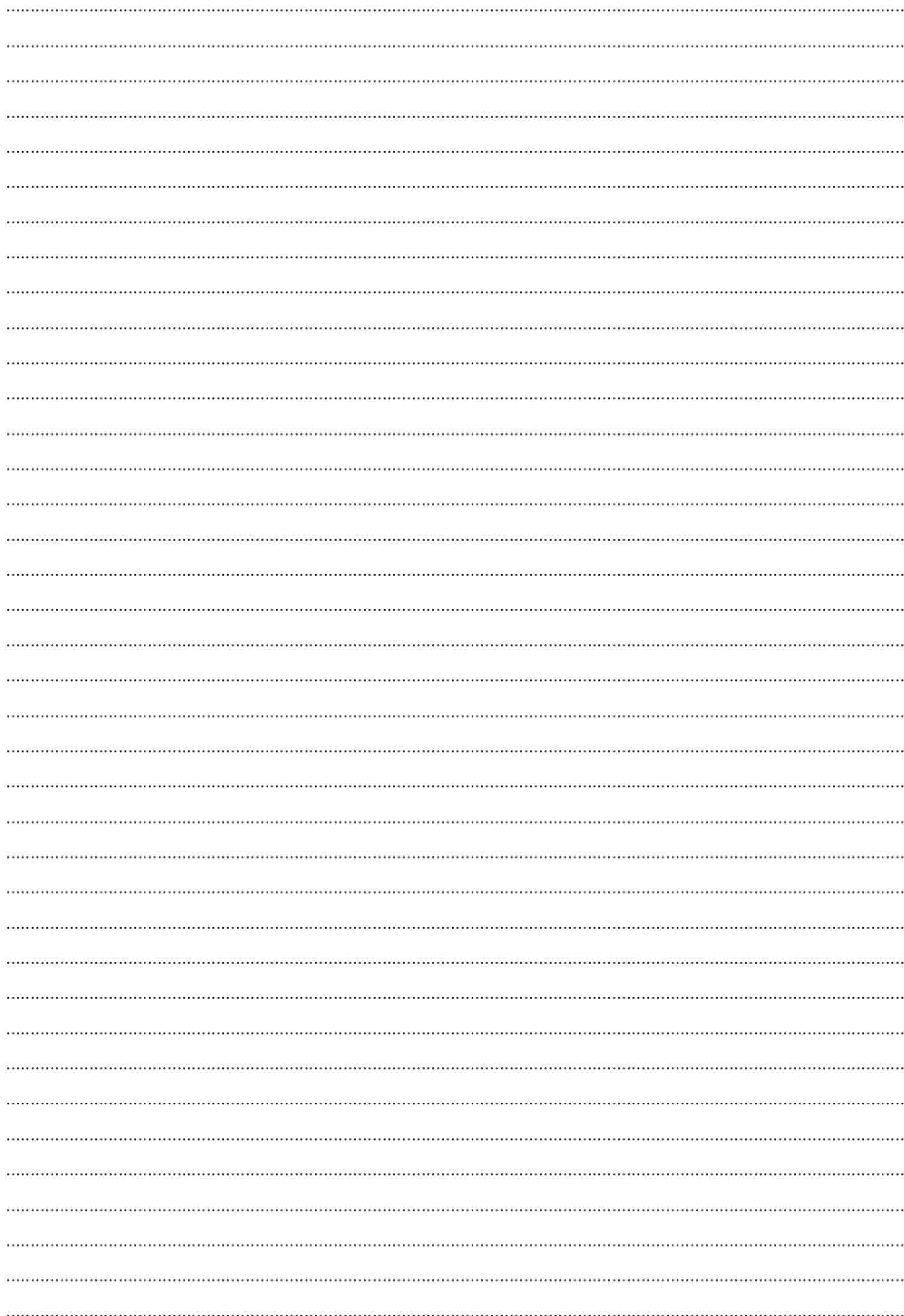
Order Code 3339933



Zone 2.21 / 2.22

II 3G Ex ec IIC T6 Gc

II 2D Ex tb IIIC T85°C Db







EAE LIGHTING Ex-Proof Lighting Products Catalog (English) - Updated: 14.05.2025
EAE Lighting reserves the right to make changes deemed necessary without prior notice.
Please contact us for more information about the products and details in the catalog.



EAE Lighting
İkitelli OSB Mah. Eski Turgut Özal Cad.
EAE No: 20, İç Kapı No: Giriş Kat
Başakşehir / İSTANBUL - TÜRKİYE
Phone : +90 212 413 21 00 (pbx)
Fax : +90 212 549 37 90
www.eaelighting.com



engineering the light